

Tenterden Drive, Hales Place, Canterbury, Kent, CT2 7BJ

£1,500 PCM

Sally Hatcher
estates



Tenterden Drive

Hales Place, Canterbury CT2 7BJ

Nestled in the desirable area of Tenterden Drive, Canterbury, this charming detached house presents an ideal family home, perfectly situated for easy access to the University of Kent and the vibrant city centre. Upon entering, you are greeted by a spacious and light-filled entrance hall, adorned with a stylish tiled floor that leads seamlessly into an open plan kitchen, dining, and living area. The modern kitchen boasts sleek white high gloss units and is equipped with all essential white goods, making it a delightful space for family gatherings and entertaining.

The ground floor features a generously sized double bedroom, offering lovely views to the front of the property, ensuring a peaceful retreat. Ascending to the first floor, you will find two additional spacious double bedrooms, both equipped with fitted wardrobes and providing pleasant views—one overlooking the rear garden and the other the front. A fourth bedroom, a large single, also enjoys front-facing views, making it a versatile space for guests or a home office.

The family bathroom is well-appointed, featuring a shower over the bath, catering to all your needs. Outside, the property boasts established gardens both at the front and rear. The front garden slopes gently, providing an attractive elevated approach, while the rear garden features terraced areas, perfect for outdoor relaxation and enjoyment.

This property is offered with the





restriction of no pets and no smokers, and falls under Council Tax band C. With its excellent location and spacious accommodation, this home is a wonderful opportunity for families seeking comfort and convenience in Canterbury.

Available Mid September 2025 for an 12 months' tenancy agreement

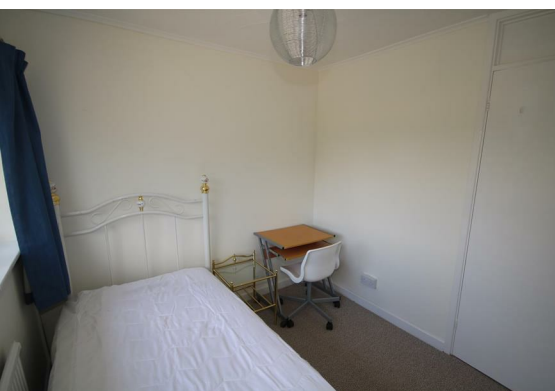
Furnished

Rent £1,500 per month

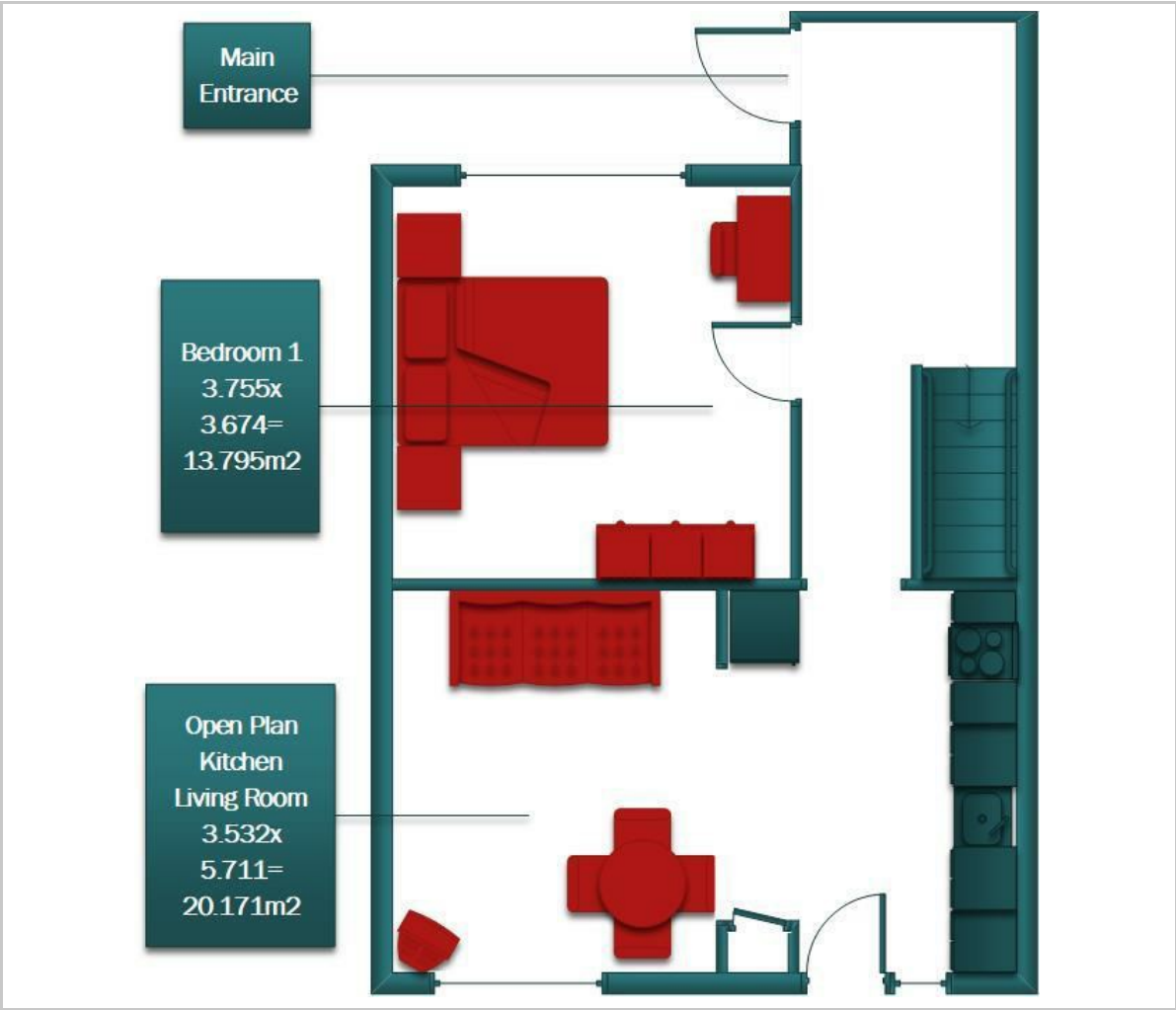
Deposit £1730.76 to be secured with the TDS

Council Tax C (Canterbury City Council)

Please refer to the fee's tab on our website (www.sallyhatcher.co.uk) for all information on fee's and deposit options



Floor Plan



Viewing

Please contact us on 01227 733888 if you wish to arrange a viewing appointment for this property or require further information.

These particulars, whilst believed to be accurate are set out as a general outline only for guidance and do not constitute any part of an offer or contract. Intending purchasers should not rely on them as statements of representation of fact, but must satisfy themselves by inspection or otherwise as to their accuracy. No person in this firms employment has the authority to make or give any representation or warranty in respect of the property.

Area Map



Energy Efficiency Graph

